

ANTAI

COMMERCIAL

TILT

Fred Ren

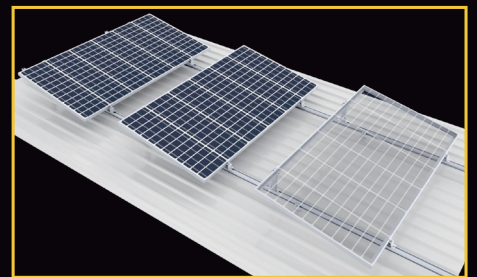
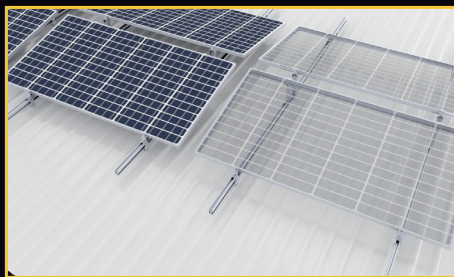
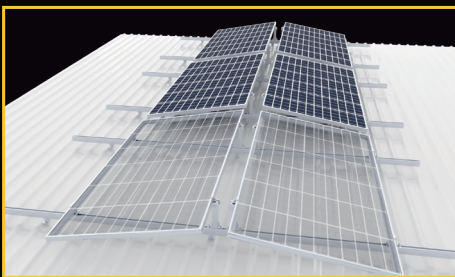
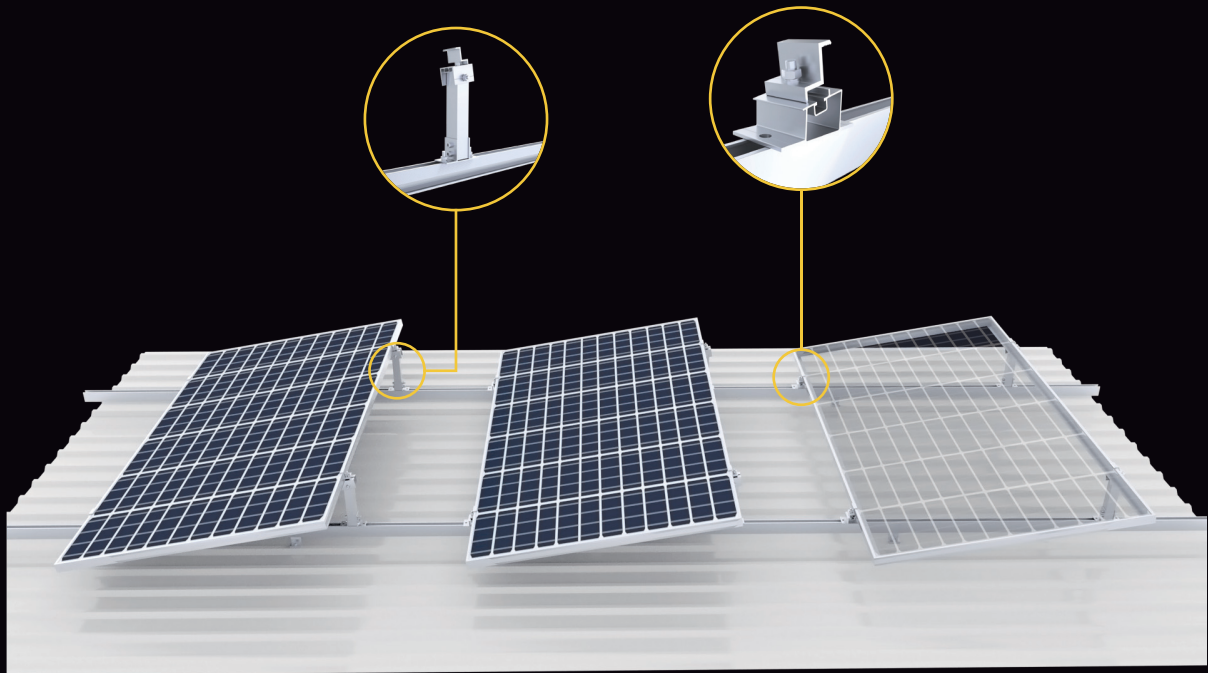
☎ 0404690617

✉ fred.ren@antaisolar.com

2022

Antai Commercial Tilt

Antai Commercial Tilt is a fast-installing PV system on all common commercial tin roofs and kliplock roofs. With universal design and 5°/10° tilt angles, it is available for different orientations including North Facing, South Facing, and East-West Facing, and greatly optimizes the output capacity.



Fast and simple installation

The pre-assembled legs and only a few components allow the easy and quick installation, greatly saving the installation time and cost.



Universal applications

The system can be applied on all common penetrative tin roofs and non-penetrative kliplock roofs. RC flat roof is also suitable for this solution with extra ballasts.



Multiple facing solutions

With universal design, it is available for different orientations including North Facing, South Facing, and East-West Facing.



Optimize system output

The system allows 2.4m x 1.3m PV panels with high power generation, and 5° / 10° tilt degree enable to optimize the system output.



More Capacity Installation

Antai Commercial Tilt can offer an east-west installation style. Compared to the north-south system, the east-west one can utilize 20-25% more panels, which can generate more power and help you make full use of space.